



High-Performing Gas Lift Compressors

Standard and custom-designed compressor packages featuring high-quality components that enable safe and rapid deployment.

Designed by our team of compression experts specifically for gas-lift applications, our top-quality units provide wide operating ranges well-suited for changing flow conditions.

With packages in stock, or scheduled for production, we offer quick delivery without compromising quality or performance.

The table below provides a summary of each unit's flow rate capabilities, at a wide range of suction and discharge pressures:

HP	Suction Pressure Range	Discharge Pressure Range	Capacity
100	50 – 350 psig	800 – 1,500 psig	0.4 – 1.75 MMSCFD
200	50 – 350 psig	800 – 1,500 psig	0.5 – 3.5 MMSCFD
400	50 – 350 psig	800 – 1,500 psig	0.75 – 6.0 MMSCFD

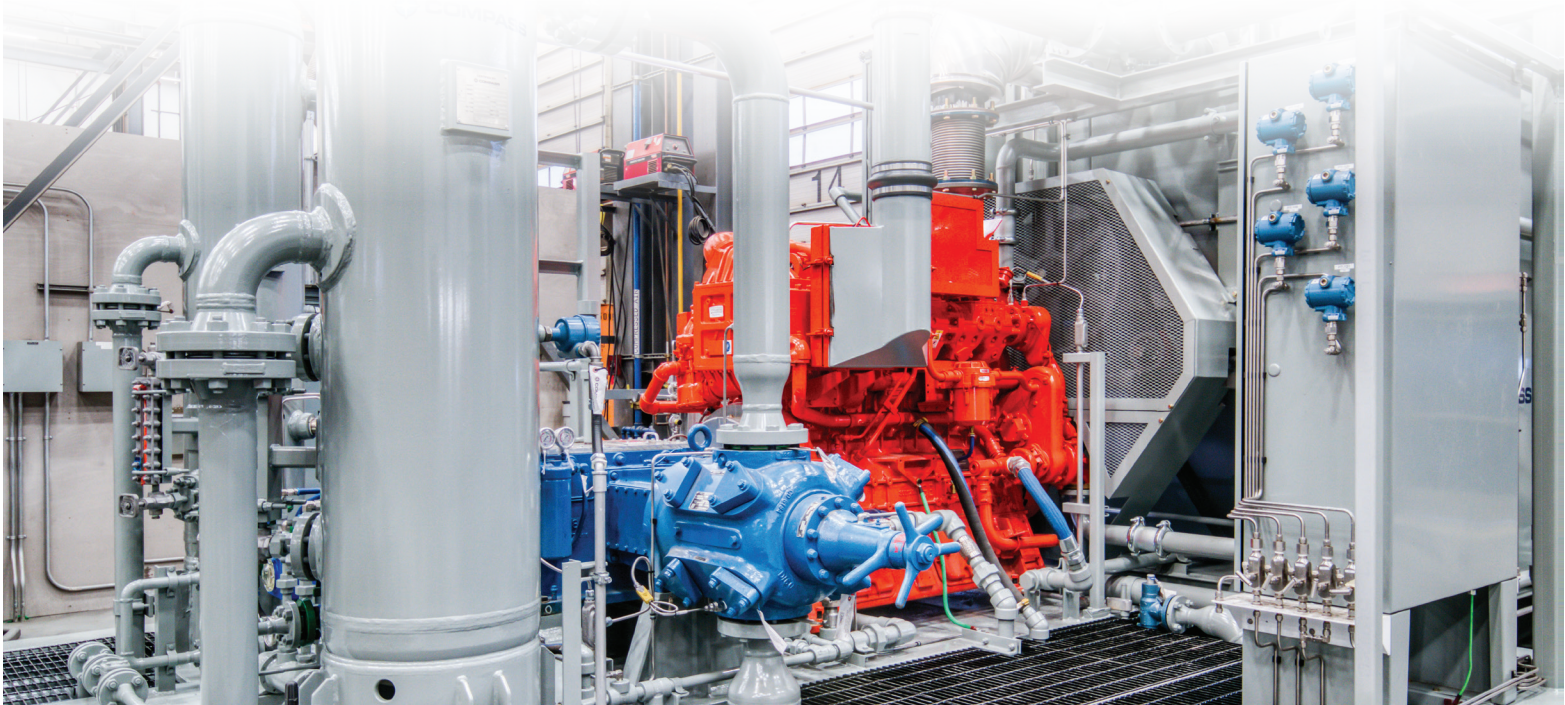
Our Gas Lift services include:

- Standard design, and stock program, for 100HP, 200HP and 400HP
- 30 MPA-designed unit is also available

Our clients have had great success with our Gas Lift units, and some clients order multiple, identical units because of this success.

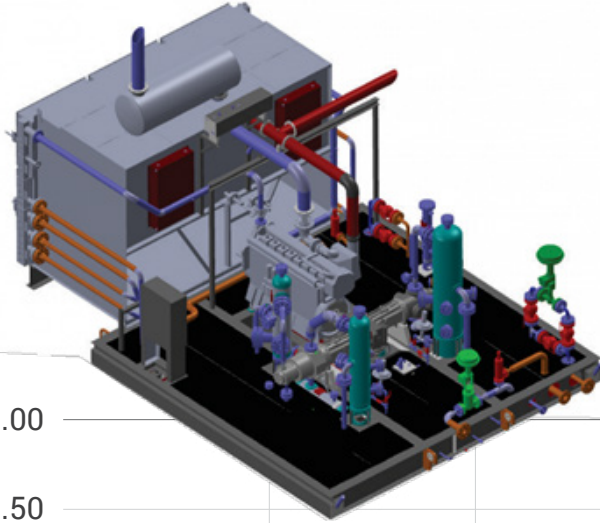
With our Retrofit and Parts + Service Divisions supporting our packages, we are committed to providing our clients with expert solutions and exceptional experiences through all stages of a project.

continued →





High-Performing Gas Lift Compressors



- Waukesha H24GL (530 HP)
- Ariel JGJ2 (3 stage)
- Sour design

